



Rat Albumin ELISA Kit

Vertrieb:

L O X O GmbH Immunbiologie Biochemie, Produkte und Systeme
Postfach 11 30 69215 Dossenheim
Telefon +49 (0) 62 21 - 86 80 23 **FAX** +49 (0) 62 21 - 86 80 255
E-Mail: info@loxo.de **Internet:** www.loxo.de

Assaypro LLC
30 Triad South Drive
St. Charles, MO 63304
T (636) 447-9175
F (636) 447-9475
www.assaypro.com

Hinweis/Note:

Der Packungsbeileger dient nur als erste Information.
Der relevante Packungsbeileger liegt der Ware bei.

The datasheet is only a first information.
The relevant datasheet is included with the product.

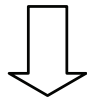
For any questions regarding troubleshooting or performing the assay, please contact our support team at support@assaypro.com.

Thank you for choosing Assaypro.

Assay Summary

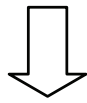
Add 25 μ l of standard/sample
and 25 μ l of biotinylated protein per well.

Incubate 1 hour.



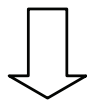
Wash, then add 50 μ l of SP per well.

Incubate 30 minutes.



Wash, then add 50 μ l of
Chromogen Substrate per well.

Incubate 12 minutes.



Add 50 μ l of Stop Solution per well.

Read at 450 nm immediately.

AssayMax Rat Albumin ELISA Kit

Catalog No. ERA2201-1
Sample Insert/Reference Only

Introduction

Albumin, a serum hepatic protein, is the most abundant protein in serum. It contributes to the maintenance of oncotic pressure as well as the transport of hydrophobic molecules (1). Serum albumin level has been linked in clinical practice to several diseases. Low albumin levels can suggest liver disease (2), kidney disease (3), inflammation (4), shock (5), and malnutrition (6). On the other hand, high albumin levels usually reflect dehydration (7).

Principle of the Assay

The AssayMax Rat Albumin ELISA (Enzyme-Linked Immunosorbent Assay) kit employs a quantitative competitive enzyme immunoassay technique that measures rat plasma and serum in less than 2 hours. A polyclonal antibody specific for rat albumin has been pre-coated onto a 96-well microplate with removable strips. Albumin in standards and samples is competed with a biotinylated albumin sandwiched by the immobilized antibody and streptavidin-peroxidase conjugate. All unbound material is then washed away and a peroxidase enzyme substrate is added. The color development is stopped and the intensity of the color is measured.

Caution and Warning

- **Prepare all reagents (working diluent buffer, wash buffer, standards, biotinylated protein, and SP conjugate) as instructed, prior to running the assay.**
- **Prepare all samples prior to running the assay. The dilution factors for the samples are suggested in this protocol. However, the user should determine the optimal dilution factor.**
- **Spin down the SP conjugate vial before opening and using contents.**
- This kit is for research use only.
- The kit should not be used beyond the expiration date.
- The Stop Solution is an acidic solution.

Reagents

- **Rat Albumin Microplate:** A 96-well polystyrene microplate (12 strips of 8 wells) coated with a polyclonal antibody against rat albumin.
- **Sealing Tapes:** Each kit contains 3 pre-cut, pressure sensitive sealing tapes that can be cut to fit the format of the individual assay.
- **Rat Albumin Standard:** Rat albumin in a buffered protein base (150 µg, lyophilized).
- **Biotinylated Rat Albumin:** 1 vial, lyophilized.
- **MIX Diluent Concentrate (10x):** A 10-fold concentrated buffered protein base (30 ml).
- **Wash Buffer Concentrate (20x):** A 20-fold concentrated buffered surfactant (30 ml).
- **Streptavidin-Peroxidase Conjugate (SP Conjugate):** A 100-fold concentrate (80 µl).
- **Chromogen Substrate:** A ready-to-use stabilized peroxidase chromogen substrate tetramethylbenzidine (8 ml).
- **Stop Solution:** A 0.5 N hydrochloric acid to stop the chromogen substrate reaction (12 ml).

Storage Condition

- Store components of the kit at 2-8°C or -20°C upon arrival up to the expiration date.
- Store SP Conjugate at -20°C.
- Store Microplate, Diluent Concentrate (10x), Wash Buffer, Stop Solution, and Chromogen Substrate at 2-8°C.
- Unused microplate wells may be returned to the foil pouch with the desiccant packs and resealed. May be stored for up to 30 days in a vacuum desiccator.
- Diluent (1x) may be stored for up to 30 days at 2-8°C.
- Store standard and biotinylated protein at 2-8°C before reconstituting with diluent and at -20°C after reconstituting with diluent.

Other Supplies Required

- Microplate reader capable of measuring absorbance at 450 nm.
- Pipettes (1-20 µl, 20-200 µl, 200-1000 µl and multiple channel).
- Deionized or distilled reagent grade water.

Sample Collection, Preparation and Storage

- **Plasma:** Collect plasma using one-tenth volume of 0.1 M sodium citrate as an anticoagulant. Centrifuge samples at 3000 x *g* for 10 minutes.

Dilute samples 1:8000 into MIX Diluent and assay. The undiluted samples can be stored at -20°C or below for up to 3 months. Avoid repeated freeze-thaw cycles (EDTA or Heparin can also be used as an anticoagulant).

- **Serum:** Samples should be collected into a serum separator tube. After clot formation, centrifuge samples at 3000 x *g* for 10 minutes and remove serum. Dilute samples 1:8000 into MIX Diluent and assay. The undiluted samples can be stored at -20°C or below for up to 3 months. Avoid repeated freeze-thaw cycles.

Reagent Preparation

- Freshly dilute all reagents and bring all reagents to room temperature before use.
- **MIX Diluent Concentrate (10x):** If crystals have formed in the concentrate, mix gently until the crystals have completely dissolved. Dilute the MIX Diluent Concentrate 1:10 with reagent grade water. Store for up to 30 days at 2-8°C.
- **Standard Curve:** Reconstitute the 150 µg of Rat Albumin Standard with 3 ml of MIX Diluent to generate a solution of 50 µg/ml. Allow the standard to sit for 10 minutes with gentle agitation prior to making dilutions. Prepare duplicate or triplicate standard points by serially diluting the standard solution (50 µg/ml) 1:2 with MIX Diluent to generate 25, 12.5, 6.25, 3.125, 1.563, and 0.781 µg/ml solutions. MIX Diluent serves as the zero standard (0 µg/ml). Any remaining solution should be frozen at -20°C and used within 30 days.

Standard Point	Dilution	[Rat Albumin] (µg/ml)
P1	Standard (50 µg/ml)	50.00
P2	1 part P1 + 1 part MIX Diluent	25.00
P3	1 part P2 + 1 part MIX Diluent	12.50
P4	1 part P3 + 1 part MIX Diluent	6.250
P5	1 part P4 + 1 part MIX Diluent	3.125
P6	1 part P5 + 1 part MIX Diluent	1.563
P7	1 part P6 + 1 part MIX Diluent	0.781
P8	MIX Diluent	0.000

- **Biotinylated Rat Albumin (1x):** Reconstitute Biotinylated Rat Albumin with 4 ml MIX Diluent to produce a working solution. Allow to sit for 10 minutes with gentle agitation prior to use. Any remaining solution should be frozen at -20°C and used within 30 days.
- **Wash Buffer Concentrate (20x):** If crystals have formed in the concentrate, mix gently until the crystals have completely dissolved. Dilute the Wash Buffer Concentrate 1:20 with reagent grade water.

- **SP Conjugate (100x):** Spin down the SP Conjugate briefly and dilute the desired amount of the conjugate 1:100 with MIX Diluent. Any remaining solution should be frozen at -20°C.

Assay Procedure

- Prepare all reagents, working standards and samples as instructed. Bring all reagents to room temperature before use. The assay is performed at room temperature (20-25°C).
- Remove excess microplate strips from the plate frame and return them immediately to the foil pouch with desiccants inside. Reseal the pouch securely to minimize exposure to water vapor and store in a vacuum desiccator.
- Add 25 µl of Rat Albumin Standard or sample per well, and immediately add 25 µl of Biotinylated Rat Albumin to each well (on top of the standard or sample) and mix gently. Cover wells with a sealing tape and incubate for 1 hour. Start the timer after the last sample addition.
- Wash five times with 200 µl of Wash Buffer manually. Invert the plate each time and decant the contents; hit 4-5 times on absorbent material to completely remove the liquid. If using a machine, wash six times with 300 µl of Wash Buffer and then invert the plate, decanting the contents; hit 4-5 times on absorbent material to completely remove the liquid.
- Add 50 µl of Streptavidin-Peroxidase Conjugate to each well and incubate for 30 minutes. Turn on the microplate reader and set up the program in advance.
- Wash the microplate as described above.
- Add 50 µl of Chromogen Substrate per well and incubate for about 12 minutes or till the optimal blue color density develops. Gently tap plate to ensure thorough mixing and break the bubbles in the well with pipette tip.
- Add 50 µl of Stop Solution to each well. The color will change from blue to yellow.
- Read the absorbance on a microplate reader at a wavelength of 450 nm **immediately**. If wavelength correction is available, subtract readings at 570 nm from those at 450 nm to correct optical imperfections. Otherwise, read the plate at 450 nm only. Please note that some unstable black particles may be generated at high concentration points after stopping the reaction for about 10 minutes, which will reduce the readings.

Data Analysis

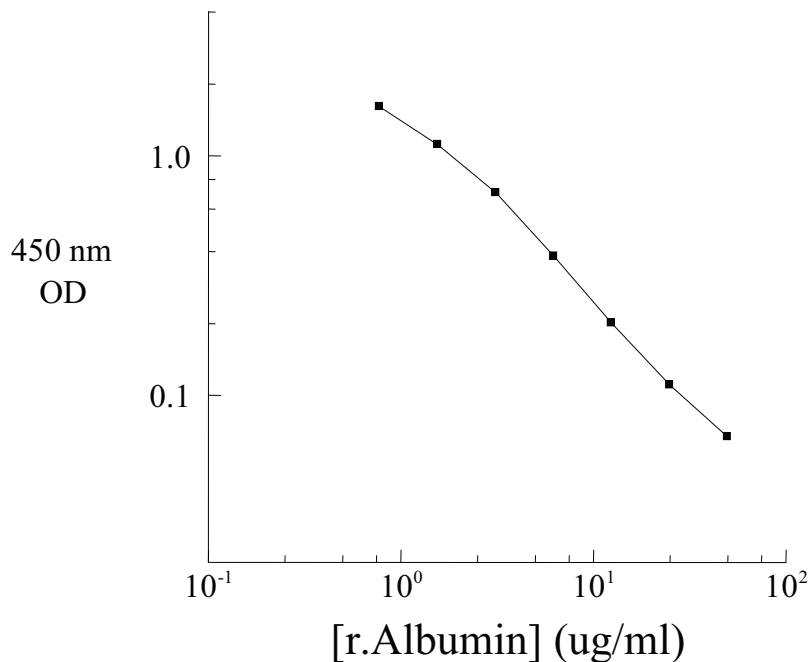
- Calculate the mean value of the duplicate or triplicate readings for each standard and sample.

- To generate a standard curve, plot the graph using the standard concentrations on the x-axis and the corresponding mean 450 nm absorbance on the y-axis. The best-fit line can be determined by regression analysis using log-log or four-parameter logistic curve-fit.
- Determine the unknown sample concentration from the Standard Curve and multiply the value by the dilution factor.

Standard Curve

- The curve is provided for illustration only. A standard curve should be generated each time the assay is performed.

R. Albumin Standard Curve



Precision, Sensitivity and Specificity

- The minimum detectable dose of albumin is typically ~ 0.7 µg/ml.
- Intra-assay and inter-assay coefficients of variation were 4.7 % and 7.3 % respectively.

Linearity

Sample Dilution	Average Percentage of Expected Value	
	Plasma	Serum
1:4000	97%	98%
1:8000	100%	101%
1:16000	105%	104%

Recovery

Standard Added Value	2 - 20 µg/ml
Recovery %	85 - 113%
Average Recovery %	98%

Cross Reactivity

Species	% Cross Reactivity
Human	None
Mouse	<1%
Rat	100%
Swine	None
Bovine	None
Beagle	None
Monkey	None
Rabbit	None

Reference Value

- Normal rat albumin plasma levels range from 20 to 50 mg/ml.

References

- (1) Gekle M. (2004) *Annu Rev Physiol.*
- (2) Schindler C *et al.* (1999) *J Hepatol.* 31(6): 1132
- (3) Hemmelder MH *et al.* (1997) *Nephrol Dial Transplant.* 12 Suppl 2:57-62
- (4) Sesmilo G *et al.* (2004) *Ann Intern Med.* 133(2): 111-22
- (5) Wettstein R *et al.* (2004) *Shock.* 22(4): 351-357
- (6) Saito T *et al.* (1991) *Jpn J Surg.* 21(4): 402-11
- (7) Strand TA (2004) *Am J Clin Nutr.* 79(3): 451-6

Version 8.2

Related Products

- EA2201-1 AssayMax Human Albumin ELISA Kit (Plasma and Serum samples)
- EA3201-1 AssayMax Human Albumin ELISA Kit (Urine, Saliva, Milk, and Cell Culture samples)
- EMA2201-1 AssayMax Mouse Albumin ELISA Kit (Plasma and Serum samples)
- EMA3201-1 AssayMax Mouse Albumin ELISA Kit (Urine and Cell Culture samples)
- ETA2202-1 AssayMax Rabbit Albumin ELISA Kit (Plasma, Serum, Urine, and Cell Culture samples)
- ERA3201-1 AssayMax Rat Albumin ELISA Kit (Urine and Cell Culture samples)
- EPA2201-1 AssayMax Swine Albumin ELISA Kit (Plasma and Serum samples)
- EPA3201-1 AssayMax Swine Albumin ELISA Kit (Urine and Cell Culture samples)